



# POLYMER INDUSTRIES

GEARED TOWARDS EXCELLENCE

**DENSETEC®**  
**HDPE**



Title: Transformed Flower  
Artist: Phillip K. Smith, III  
Location: Kansas City, MO - in the Richard and Annette Bloch Cancer Survivors Park  
Installation Date: May 2008  
Artist website: [www.theartoffice.com](http://www.theartoffice.com)  
Photography: Phillip K. Smith, III

High Density Polyethylene Sheet – PE 300



## APPLICATIONS

Furniture

Tank Liners

Chute Liners

Wood Replacement

Silo and Hopper Liners

Light Duty Chain Guides

Art

Water Storage

Machine Parts

Cosmetic Applications

Secondary Containment

Valve and Pump Parts

Support Braces

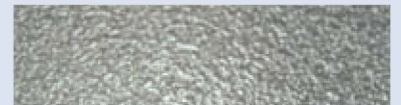
Structural Tanks

Chemical Tank Covers

Food Processing Facilities

Food Processing Equip.

Poultry Processing Equip.



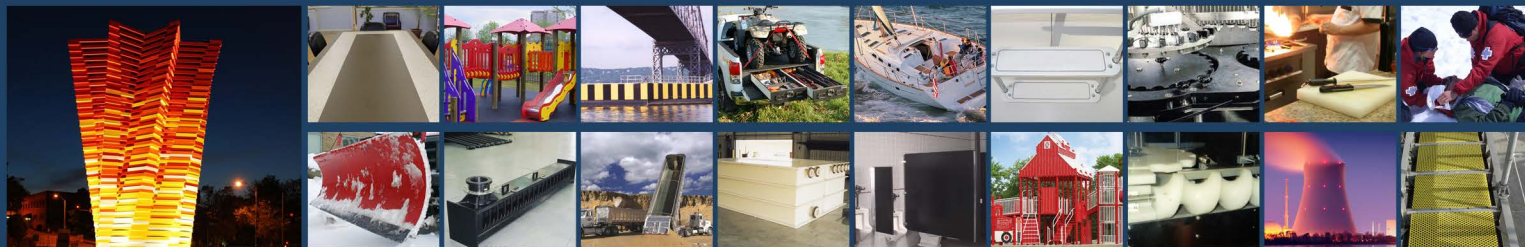
Orange Peel Finish



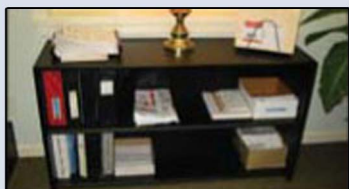
Smooth Finish



Planed Finish



## DENSETEC® HDPE



### FEATURES

Stain resistant	Durable
Lightweight	Odor Resistant
Graffiti resistant	Abrasion resistant
Moisture resistant	Easily fabricated
RoHS & Reach compliant	Chemical resistant
Low coefficient of friction	High impact strength

### COLORS

Natural\*

Black

\*FDA approved and NSF Standard 51 certified

### SIZES

STANDARD:	<u>Extruded</u> inch / mm	<u>Compression Molded</u> inch / mm
Thickness	0.03 - 1 / 0.8 - 25	Not a Standard Product
Sheet Size	48 x 96 / 1220 x 2440 48 x 120 / 1220 x 3050 60 x 120 / 1525 x 3050	
CAPABILITIES:	<u>Extruded</u> inch / mm	<u>Compression Molded</u> inch / mm
Thickness	0.03 - 1.25 / 0.8 - 32	0.5 - 4 / 12.7 - 100
Width	45 - 144 / 1140 - 3655	48 - 96 / 1220 - 2440
Length	Up to 480 / 12200	Up to 240 / 6100

### FINISH

Smooth - standard extruded finish  
Orange peel - available extruded finish  
Planed - standard compression molded finish

Note: Other sizes, colors, formulations and forming grade available upon request

Distributed by:



**Piedmont Plastics®**  
where solutions take shape

Toll Free: 1.800.277.7898

[www.piedmontplastics.com](http://www.piedmontplastics.com)