



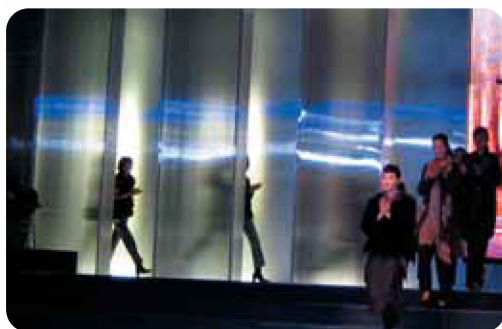
BRINGS NATURE IN

# Selectogal (RFX)



# Selectogal (RFX)

In nature the sun's light and warmth are an integral part of life, making it more pleasant when we bask in its bright and warming rays. Polygal's Selectogal panels allow us to experience the wonders of nature and shape its joie de vivre, when you use Selectogal, you are surrounded by aesthetic beauty. Selectogal's special construction markedly reduces the level of heat during summer while allowing maximum penetration of solar energy during winter. Available in 16 mm thick sheets, Polygal's Selectogal is easy to install, long lasting, offers an aesthetic roofing solution and can be used for interior design and projects as well.



## Technical specifications

Thickness	16 mm (5/8")
Weight	3 kg/m <sup>2</sup> (0.62 lb/ft <sup>2</sup> )
Standard width	1.05 m (41")
Min radius for cold bending arches	2.8 m (9' 2")
U-factor ASTM-C-177	2.3 w/m <sup>2</sup> · °C (0.41 Btu/hr · ft <sup>2</sup> · °F)
Light transmission ASTM D-1003 (%)	clear 75
	bicolor* 32

\* Other colors on special request

Polygal is the leading manufacturer of multi wall Polycarbonate sheets, and is known throughout the world for the outstanding quality of its products.

Polygal was the first manufacturer in the world to create multi wall Polycarbonate sheets, and over the last 30 years, has developed and produced a broad spectrum of these products, which are successfully covering a full array of structures worldwide.

The data in this advertisement is provided in good faith and constitute general information without commitment, and no warranty is given or implied. Polycarbonate is a combustible thermoplastic material that complies with various international standards, as customary in each country. Avoid exposure to excessive heat or aromatic cleaning solvents. Normal fire precautions should be taken to protect against combustion.

Distributed by:



**Piedmont Plastics®**  
where solutions take shape

Toll Free: 1.800.277.7898  
www.piedmontplastics.com



Always look for  
the original sign

