

steel
magnet

NEWLIFE MAGNETICS

THINNER, WIDER, STRONGER FLEXIBLE MAGNETS FOR INNOVATIVE GRAPHIC SOLUTIONS

GLOBAL LEADER



Distributed by:



Piedmont Plastics®

where solutions take shape

Toll Free: 1.800.277.7898

www.piedmontplastics.com

HIGH QUALITY PRODUCTS BY
GUANGZHOU NEWLIFE MAGNET ELECTRICITY CO., LTD.

steel
magnet

CONTENTS

ABOUT US	2
ABOUT MACO	3
MACO: DIGIVINYL-MAG & INO-MAG.....	5
MACO: INO-STEEL & WALL-MAG	6
APPLICATION EXAMPLES	7
MAGNETIC SHEETING	9
HI-POWER MAGNETS	10
PRINTABLE MAGNETIC SHEETING	11
MAGNETIC PAPER.....	12
MAGNETIC EXTRUSION STRIPS.....	13
STEEL SHEETING	14
ROLLUP WHITEBOARD & CHALKBOARD	15
CLING-KING PRINT MEDIA	16
PRINTING INDEX.....	17
PACKAGING	18

ABOUT US

Newlife Magnet Electricity Co., Ltd is the world's largest manufacturer of flexible magnetic materials and finished products. We are the inventor and the world's largest manufacturer of wide-format magnetic POP materials up to 64 inches wide. We have decades of experience in manufacturing magnet materials and our professional R&D team of 55 scientist and engineers leads the industry in innovation and new product development.

Our continuous efforts to study and research new ways to apply magnets in the print and sign industry, and to improve our magnetic materials, enables us to offer you the thinner, wider, lighter, and stronger magnetic materials and the best printing solutions available. Our **MACO** product brand of patented materials for POP, sign and display was named the Award Winning Product for Sign Making at the 2008 VISCOM trade show in Frankfurt Germany. Today we offer the third generation of new and unique **MACO** products with stronger magnetic energy and new print mediums. Newlife's **MACO** products are made of recycled materials that are eco-friendly and meet EN71, RoHS, and ASTM requirements. We also have materials that are 100% recyclable.

Newlife Magnetics LLC is the North American Division of Guangzhou Newlife Magnet Electricity Co., Ltd.



HEADQUARTERS AND CANGHAI FACTORY



YONGHE FACTORY



VIETNAM FACTORY

ABOUT MACO

Concerned about mounting posters and making them look good?

Worried about graphics mounted to a foam board getting damaged during delivery?

Tired of the problems of placing AD graphics in chain stores with multiple locations?

Magnetic printable media is a wonderful solution. We supply the widest, thinnest, and strongest energy materials available in printable magnets, magnetic receptive materials, and cling materials through our MACO products.

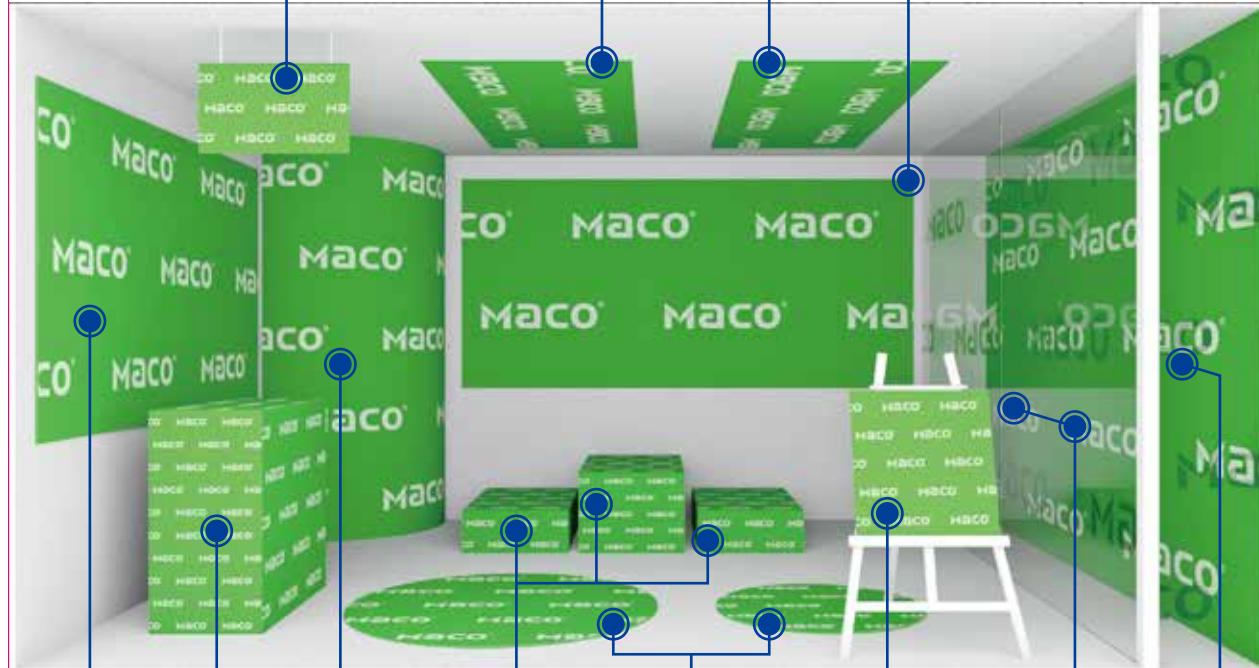
MACO has six product lines: *Ino-Steel™*, *Ino-Mag™*, *DigiVinyl-Mag™*, *Hi-Force Magnets*, *Wall-Mag™*, and *Cling-King™*.

MACO® for retail & events

MACO for hanging banners

MACO for ceiling

MACO for wall graphics



MACO for POP displays

MACO for décor graphics

MACO for indoor-outdoor graphics

MACO for window graphics

MACO for event graphics

MACO for floor graphics

MACO for wall paper

MACO for retail graphics

ABOUT MACO



Ino-Steel™, *Ino-Mag™*, *DigiVinyl-Mag™*, *Hi-Force Magnets*, *Wall-Mag™*, *Cling-King™*

Newlife's **MACO®** magnetic system is widely used in POP and sign display industrials, which is composed by high quality *Ino-Mag™*, *Ino-Steel™*, *DigiVinyl-Mag™*, *Hi-Force magnets*, *Wall-Mag™*, *Cling-King™*. These magnetic printable medias have similar printing and die cutting capabilities as posters or flexible banners. The biggest advantage is that they can be installed quickly, removed, exchanged, re-installed, and stacked in multi-layers to create a message that can be added to, changed, or removed easily.



viscom
INNOVATION AWARD

CE
EN71

ISO 9001
2008

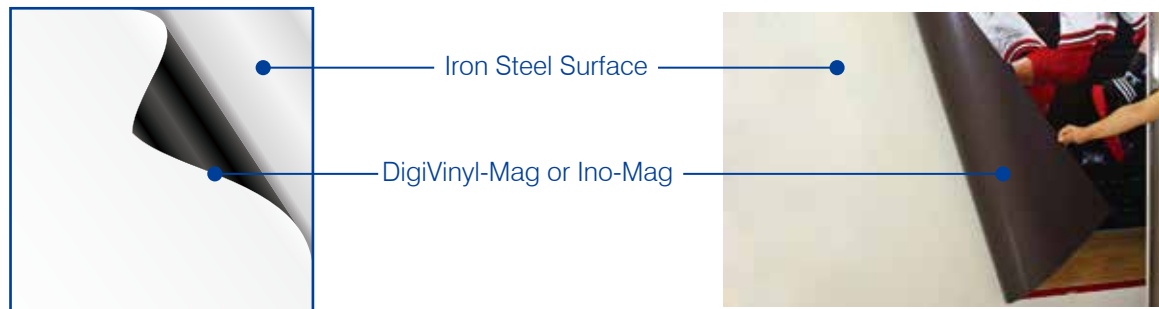
ASTM

ISO 14001

MACO: DIGIVINYL-MAG & INO-MAG

INSTALLATION ON STEEL SURFACE:

Stick DigiVinyl-Mag or Ino-Mag directly on iron or steel surfaces.



DigiVinyl-Mag is permanent magnetic material, with one side magnetized and other side high quality PVC. With high performance of magnetic power, **DigiVinyl-Mag** is widely used indoor and outdoor, and is available in widths up to 48". **Hi-Force Magnet** is a premium material with stronger energy.

PART NO.	DESCRIPTION & SUPERIORITY	MAGNETIC CONDUCTION	PRINTABILITY		L x W
			COMPATIBLE	TESTING REQUIRED	
NM-MWC-019	DigiVinyl-Mag: 15mil magnet with matte white vinyl (PVC), total 19mil thick, UV curable	isotropic ≥35 lbs. pull/ft2 (≥17g/cm2)	<div>UVSC</div> <div>OFFL</div>	<div>SES</div> <div>L</div>	50F x 24.375" 50F x 30" 50F x 40" 50F x 42" 50F x 48"
NM-MWC-024	DigiVinyl-Mag: 20mil magnet with matte white vinyl (PVC), total 24mil thick, UV curable	isotropic ≥50 lbs. pull/ft2 (≥24g/cm2)	<div>UVSC</div> <div>OFFL</div>	<div>SES</div> <div>L</div>	
NM-MWC-034	DigiVinyl-Mag: 30mil magnet with matte white vinyl (PVC), total 34mil thick, UV curable	isotropic ≥77 lbs. pull/ft2 (≥38g/cm2)	<div>UVSC</div> <div>OFFL</div>	<div>SES</div> <div>L</div>	
NMA-MWC-024	Hi-Force Magnet: 20mil high energy magnet with matte white vinyl (PVC), total 24mil thick, UV curable	anisotropic ≥90 lbs. pull/ft2 (≥43g/cm2)	<div>UVSC</div> <div>OFFL</div>	<div>SES</div> <div>L</div>	50F x 24.375" 50F x 40" 50F x 42"
NMA-MWC-034	Hi-Force Magnet: 30mil high energy magnet with matte white vinyl (PVC), total 34mil thick, UV curable	anisotropic ≥123 lbs. pull/ft2 (≥60g/cm2)	<div>UVSC</div> <div>OFFL</div>	<div>SES</div> <div>L</div>	
<div><div>S</div><div>ES</div><div>UV</div><div>L</div><div>OFF</div><div>FL</div><div>SC</div><div>LS</div><div>SOLVENT</div><div>ECO SOLVENT</div><div>UV CURABLE</div><div>HP LATEX</div><div>OFFSET</div><div>FLEXO</div><div>SCREEN PRINT</div><div>TONER/HP INDIGO</div></div>					

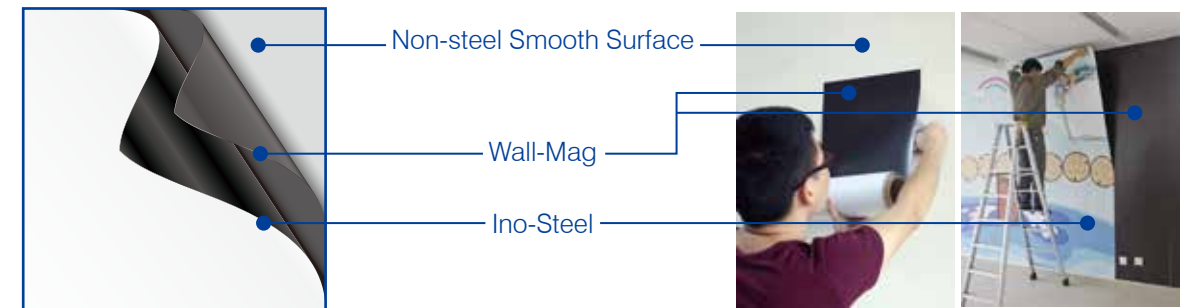
Ino-Mag is the widest and thinnest printable magnets in the world, 50", 54" and 60" wide, providing you the ideal materials to make the largest advertising graphic and signature.

PART NO.	DESCRIPTION & SUPERIORITY	MAGNETIC CONDUCTION	PRINTABILITY		L x W
			COMPATIBLE	TESTING REQUIRED	
NMA-SOL-WT012	Ino-Mag: 8mil high energy magnet with matte PET (polyester film), total 12mil thick, good for solvent and eco-solvent printer	anisotropic ≥ 18 lbs. pull/ft2 (≥9g/cm2)	<div><div>ES</div><div>S</div><div>SC</div><div>OF</div><div>FL</div></div>	<div><div>L</div><div>UV</div><div>LS</div></div>	100F x 50" 100F x 54" 100F x 60"
NMB-SOL-WT012	Ino-Mag: 8mil magnet with matte PET (polyester film), total 12mil thick, good for solvent and eco-solvent printer	isotropic ≥ 14 lbs. pull/ft2 (≥7g/cm2)	<div><div>ES</div><div>S</div><div>SC</div><div>OF</div><div>FL</div></div>	<div><div>L</div><div>UV</div><div>LS</div></div>	
NMA-UV-WT012	Ino-Mag: 8mil high energy magnet with matte PET (polyester film), total 12mil thick, UV curable and HP-Latex suitable	anisotropic ≥ 18 lbs. pull/ft2 (≥9g/cm2)	<div><div>UV</div><div>L</div><div>SC</div><div>OF</div><div>FL</div></div>		
NMB-UV-WT012	Ino-Mag: 8mil magnet with matte PET (polyester film), total 12mil thick, good for UV curable and HP-Latex printer.	isotropic ≥ 14 lbs. pull/ft2 (≥7g/cm2)	<div><div>UV</div><div>L</div><div>SC</div><div>OF</div><div>FL</div></div>		
<div><div><div>S</div><div>ES</div><div>UV</div><div>L</div><div>OF</div><div>FL</div><div>SC</div><div>LS</div><div>SOLVENT</div><div>ECO SOLVENT</div><div>UV CURABLE</div><div>HP LATEX</div><div>OFFSET</div><div>FLEXO</div><div>SCREEN PRINT</div><div>TONER/HP INDIGO</div></div></div>					

MACO: INO-STEEL & WALL-MAG

INSTALLATION ON NON-STEEL SMOOTH SURFACE :

Install the Wall-Mag with adhesive back first then stick the printed steel sheeting directly on magnet.



Magnetic receptive sheeting **Ino-Steel** and magnetic base **Wall-Mag** work together on normal painted wall or board. Once the magnetic base is installed it can be used for a long time. Great Wide-format graphics!

Ino-Steel is ideal for POP displays. This material is non-magnetic and can be installed quickly, removed, exchanged, re-installed, and stacked on **Wall-Mag** 1 to 4 layers thick to create a message that can be added to, changed, or removed easily. Our printable magnetic receptive materials are suitable for UV, eco-solvent, solvent, and latex inks etc.

PART NO.	DESCRIPTION & SUPERIORITY	MAGNETIC CONDUCTION	PRINTABILITY		L x W
			COMPATIBLE	TESTING REQUIRED	
NS-UV-WT010	10mil with high magnetic conduction. Steel sheeting laminated with matte white PET (polyester film), UV curable and HP-Latex suitable	≥10.4 lbs. pull/ft2 (≥5g/cm2)	UV L SC OF FL		100F x 50" 100F x 54" 100F x 60"
NS-SOL-WT010	10mil with high magnetic conduction. Steel sheeting laminated with matte white PET (polyester film), good for eco-solvent and eco-solvent printer.	≥10.4 lbs. pull/ft2 (≥5g/cm2)	ES S SC OF FL	L UV LS	100F x 50" 100F x 54" 100F x 60"
NS-MWP012	12mil with high magnetic conduction. Steel sheeting laminated with matte white PP (polypropylene film).	≥10.4 lbs. pull/ft2 (≥5g/cm2)	UV FL OF SC		100F x 50" 100F x 54" 100F x 60"
NS-ART013	13mil, steel sheeting laminated with semi-matte paper, the most economical solution	≥10.4 lbs. pull/ft2 (≥5g/cm2)	UV L SC OF FL	LS	100F x 50" 100F x 54" 100F x 60"
<div><div>S</div><div>ES</div><div>UV</div><div>L</div><div>OF</div><div>FL</div><div>SC</div><div>LS</div><div>SOLVENT</div><div>ECO SOLVENT</div><div>UV CURABLE</div><div>HP LATEX</div><div>OFFSET</div><div>FLEXO</div><div>SCREEN PRINT</div><div>TONER/HP INDIGO</div></div>					

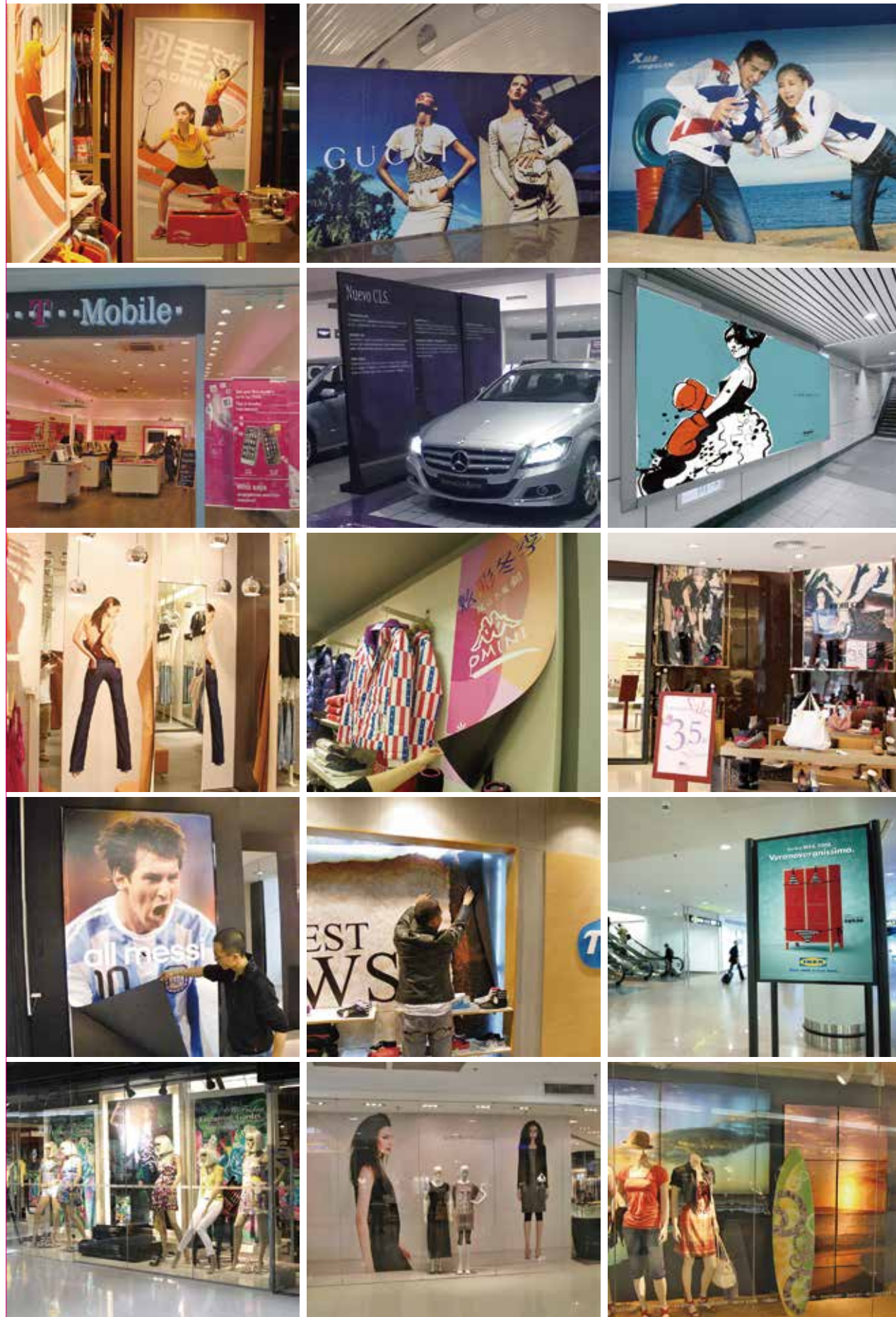
Wall-Mag is magnetic material which perfectly suited to work with **Ino-Steel** or other steel films.

Wall-Mag Adhesive Magnet with adhesive has one side magnetized and the other side with outdoor adhesive. We offer standard and high energy magnetic properties.

Wall-Mag 2 Sides mag Magnetized on both sides, with high energy magnetic property material.

PART NO.	DESCRIPTION & SUPERIORITY	MAGNETIC CONDUCTION	L x W
MB-BK-030-PSA (NM-NPSA-030)	30mil magnet with adhesive back, plain brown finish	isotropic ≥77 lbs. pull/ft2 (≥38g/cm2)	50F x 24.375" Custom sizes are available upon request.
MBA-BK-030-PSA (NMA-NPSA-030)	30mil high energy magnet with adhesive back, plain brown finish	anisotropic ≥123 lbs. pull/ft2 (≥60g/cm2)	
MBA-MW-030-PSA	30mil high energy magnet with adhesive back, matte white finish	anisotropic ≥90 lbs. pull/ft2 (≥43g/cm2)	
MBA-BK-030	30mil high energy magnet with 2 sides magnetized, plain brown finish	anisotropic	
MBA-BK-040	40mil high energy magnet with 2 sides magnetized, plain brown finish	anisotropic	

APPLICATION EXAMPLES



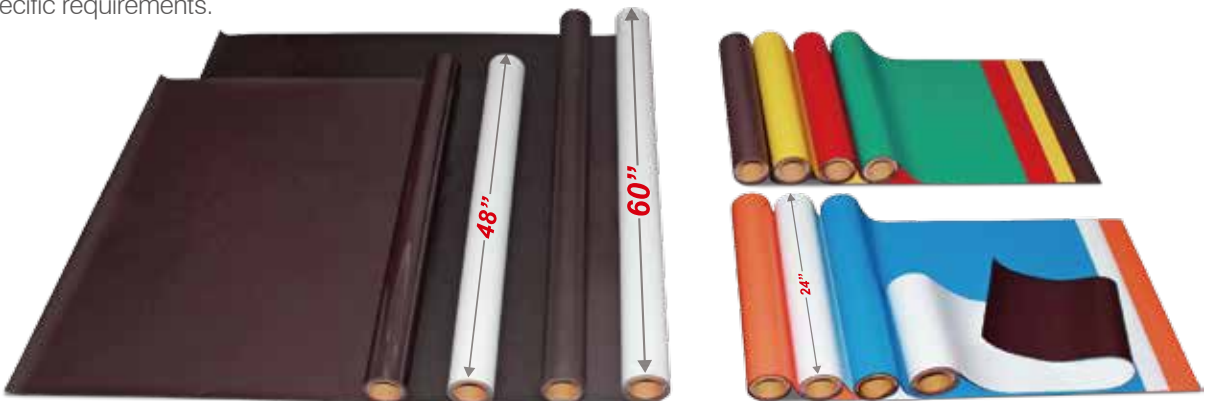
APPLICATION EXAMPLES



MAGNETIC SHEETING

Flexible magnetic material is made by mixing ferrite magnet powder with plastic or synthetic rubber (CPE, NBR etc.). It has a permanent magnetic property with excellent flexibility characteristics. It can be easily cut, slit, punched, folded and twisted without damaging the magnetic properties.

Flexible magnetic material can be classified as both standard magnetic energy (isotropic) and high magnetic energy (anisotropic) according to their magnetic properties. You may also request your own magnetic properties and thickness, or just tell us your application requirements and we will recommend a suitable material for you. Our strong technical capabilities enable us to adjust the magnetic and fiscal properties of our materials to meet our customer's specific requirements.



SPECIFICATIONS

THICKNESS	WIDTH	LENGTH	FINISH/LAMINATES
10mil (0.25mm)	12" (305mm) 24" (610mm) 40" (1.02M) 48" (1.22M) 50" (1.27M) 60" (1.52M)	15ft. 25ft. 50ft. 100ft. 1500ft.	PLAIN BROWN
15mil (0.4mm)			MATTE/GLOSS WHITE PVC
20mil (0.5mm)			COLOR PVC
30mil (0.76mm)			ECO-SOLVENT PET OR PP FILM
40mil (1.0mm)			PRINTABLE PAPER
up to 315mil (8mm)			ADHESIVE TAPE

Custom thickness and width are available upon request.

MAGNETIC PROPERTIES

	MAX. MAGNETIC ENERGY		REMANENCE		COERCIVE FORCE		INTRINSIC COERCIVE FORCE	
	(BH)MAX		BR		HCB		HCJ	
	MGOE	KJ/M3	KGS	MT	KOE	KA/M	KOE	KA/M
ISOTROPIC	0.5-0.7	4.0-5.6	1.5-1.7	150-170	1.2-1.4	95-111	1.9-2.0	151-159
ANISOTROPIC	1.3-1.6	10.4-12.8	2.3-2.6	230-260	2.1-2.3	167-183	2.4-3.5	191-278

Custom magnetic properties are available upon request.

PHYSICAL PROPERTIES

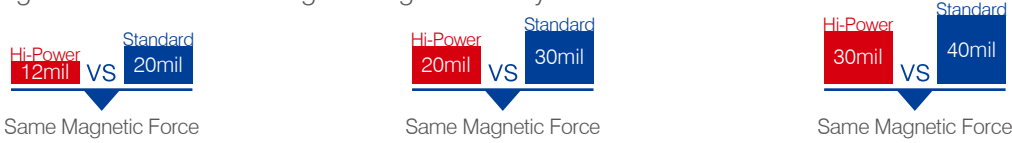
- ⌚ Working Temperature: -15°F to 176°F (-26°C to 80°C)
- ⌚ Flexibility at 68°F (20°C): the material can be coiled to a 1/2" (12.7mm) diameter without cracking
- ⌚ Hardness: shore D35~50
- ⌚ Newlife's advanced UV back coating protects from surface staining and sticking and it eliminates blocking and marring. In addition, we offer an upgraded material with high quality pp on the back that gives our material a better weather proof performance
- ⌚ Newlife's products are made from eco-friendly materials that meet EN71, RoHS, and ASTM standards
- ⌚ Precut custom shapes
- ⌚ Custom packaging
- ⌚ High energy available at all thicknesses
- ⌚ Eco-solvent PET and PP film
- ⌚ Custom colors of PVC are avialble
- ⌚ Ask us about our new 60" wide sheeting!

HI-POWER MAGNETS

Hi-Power Magnets are permanently magnetized for long-life of service and provide higher energy than standard magnets.

Same thickness but double the magnetic force!

Make your magnets thinner without losing the magnetic force you need.



HI-POWER CAR SIGN MAGNETS



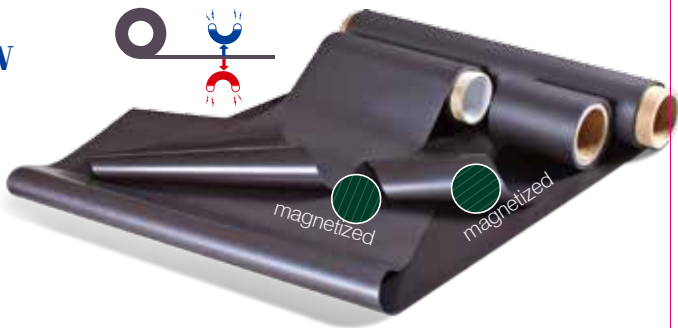
Our Hi-Power magnets are laminated with high quality PVC which is suitable for UV curable digital printing and screen printing. The material is only 20mil thick but has 10% more magnetic force than standard 30mil magnets. It is more flexible to make your print easy and with light weight to save your transport cost.

PART NO.	DESCRIPTION & SUPERIORITY	MAGNETIC CONDUCTION	PRINTABILITY		L x W
			COMPATIBLE	TESTING REQUIRED	
NMA-MWC-024	20mil high energy magnet with matte white vinyl (PVC), total 24mil thick, UV curable	anisotropic ≥90 lbs. pull/ft2 (≥43g/cm2)	UV SC OF FL	S ES L	50F x 24.375" 50F x 40" 50F x 42"
NMA-MWC-034	30mil high energy magnet with matte white vinyl (PVC), total 34mil thick, UV curable	anisotropic ≥123 lbs. pull/ft2 (≥60g/cm2)	UV SC OF FL	S ES L	

HI-POWER MAGNETS - PLAIN BROWN

Hi-power magnets is available to be magnetized at single side or two sides.

2 sides magnetized material is a convenient solution for both sides lamination or both sides work with magnetic receptive material.



PART NO.	DESCRIPTION & SUPERIORITY	MAGNETIC CONDUCTION	L x W
NMA-PB-012	Extra thin 12mil high energy magnet, finish as plain brown	anisotropic ≥22 lbs. pull/ft2 (≥11g/cm2)	100F x 50" 100F x 54" 100F x 60"
NMA-PB-020	20mil high energy magnet, finish as plain brown	anisotropic ≥82 lbs. pull/ft2 (≥40g/cm2)	50F x 24.375" 50F x 40" 50F x 42"
NMA-PB-030	30mil high energy magnet, finish as plain brown	anisotropic ≥123 lbs. pull/ft2 (≥60g/cm2)	

PRINTABLE MAGNETIC SHEETING

We offer many kinds of different printing materials that can be laminated on our flexible magnetic sheeting. These materials include PVC, PP, PET, and paper. We have materials that are suitable for many different printing processes such as screen print, solvent or eco-solvent inkjet print, desktop inkjet print, offset print, etc. We have also developed printable coatings that offer unique printing solutions and finished products.



MAGNETIC SHEETING LAMINATED WITH MATT OR GLOSS PVC - DigiVinyl-Mag

PVC is suitable for digital inkjet printing or screen printing with UV curable or solvent, eco-solvent ink. We use a high quality PVC material that is waterproof and comes with a matt or gloss finish. You may choose from our standard PVC colors of white, black, red, yellow, blue, green, and orange, or you may request your own color. Magnetic sheeting comes with standard or high energy magnetic properties. The total thickness is from 0.4mm (15mil) to 1mm (40mil). The width is from 620mm (24 inches) to 1.27M (50 inches).

MAGNETIC SHEETING LAMINATED WITH DIGITAL PRINTABLE PET OR PP

We offer various digital printable PET or PP, which are suitable for solvent or eco-solvent ink, UV ink, latex ink, water based ink and so on. These high quality PET and PP liner material have an environment protection coating that facilitates quick drying after printing and a perfect printed finish. Magnetic sheeting comes with standard or high energy magnetic properties. The total thickness is from 0.25mm (10mil) to 1mm (40mil). The width is from 620mm (24 inches) to 1.52M (60 inches).

MAGNETIC SHEETING LAMINATED WITH PP PAPER

PP paper is suitable for offset printing, flexo printing and laser printing, which is waterproof. The magnet material is available in standard or high energy properties. The total thickness is from 0.25mm (10mil) to 1mm (40mil). The width is from 300mm (12 inches) to 1.52M (60 inches). Custom size sheets are available upon request. Material comes either pre-magnetized or un-magnetized. We can also provide magnetizers for you to magnetize the material after printing.

MAGNETIC SHEETING LAMINATED WITH ART PAPER

Art paper is suitable for offset printing, flexo printing, laser printing and other printing methods used on art paper. Art paper has a semi-gloss finish. The magnet material is available in standard or high energy properties. Total thickness is 0.3mm (12mil) or thicker if requested. Custom size sheets are available upon request. Material comes either pre-magnetized or un-magnetized. We can also provide magnetizers for you to magnetize the material after printing.

MAGNETIC SHEETING LAMINATED WITH INKJET PAPER

Inkjet paper is suitable for desktop printing and is a good choice for D.I.Y. Use in the office, school or the home. Inkjet paper has a matt finish. The magnet material has a standard energy property. Total thickness is 0.26mm (10mil). Standard sheet sizes are A4 and A3. Custom sheet sizes are available upon request.

MAGNETIC SHEETING LAMINATED WITH HIGH GLOSS PHOTO PAPER

High gloss photo paper is ideal for color inkjet printing. Photos printed on this material have the same high quality finish as those printed on normal photo paper. The only difference is that since your photos will be printed on magnetic paper you can attach them to your fridge, file cabinets, metal doors or any other metal surface. The magnet material has a standard energy property. Total thickness is 0.3mm (12mil). Standard sheet sizes are A4 and A3. Custom sheet sizes are available upon request.

MAGNETIC PAPER

Our magnetic inkjet printable paper is flat and perfectly flexible. It can be uniquely formulated for printing digital images at high resolution with professional results from any digital inkjet printer.



- User Guide:
- ☞ Easily cut into any shape
 - ☞ Stick the picture on any metal surface
 - ☞ Standard size: A5, A4, A3...
 - ☞ Surface: high gloss, matt

MAGNETIC INKJET PAPER

Send a post card that can be displayed on the fridge, file cabinet or any other metal object.



Printable On
Both Sides !!!

MAGNETIC POST CARDS

Our colorful steel paper is thin and perfectly flexible with an anti-rust steel base material and a colored paper surface. It can be printed, copied, painted, cut and attached to any magnetic material. Standard colors include yellow, red, blue, green, purple, orange and white.



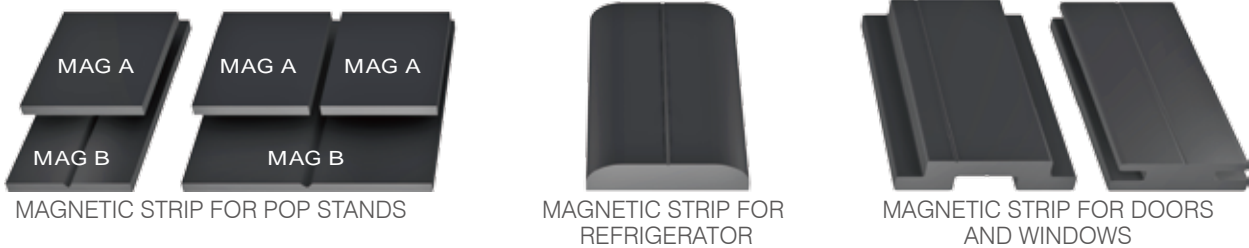
COLORFUL STEEL PAPER

MAGNETIC EXTRUSION STRIPS

Newlife owns over 300 types of profiles. Magnetic extrusion strip is widely used for display, fridge doors, house window and doors, warehouse signs, etc. The magnetic pole pattern can be made according to the customer's specifications. There are many different types of adhesive such as solvent, rubber or foam that can be laminated on the non-magnetized side. Then you can adhere anything to the magnet strip and stick it onto fridges, file cabinets, or any other metal surface. Please let us know what type of object the adhesive should stick to (such as paper, plastic, metal, wood) and the application (such as indoor or outdoor, normal, high or low temperatures) and we will provide more information and recommend the correct adhesive. Select a profile from our large selection of profiles and avoid tooling charges. Custom profiles and sizes are available upon request. Contact our sales department for a complete list of available profiles.

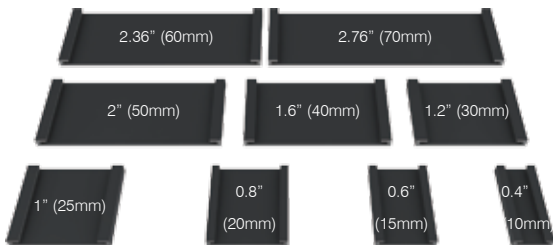


POPULAR PROFILES



“C” PROFILE CARD HOLDER

This strip is shaped like the letter “C”. Simply insert a label of suitable size into the strip's grooves and then attach it to metal cabinets and/or steel shelving. This product is widely used in warehouses and file rooms. We have 9 different standard sizes to choose from.



THERE ARE MANY STOCK PROFILES TO CHOOSE FROM



MAGNETIC PROPERTIES

	MAX. MAGNETIC ENERGY		REMANENCE		COERCIVE FORCE		INTRINSIC COERCIVE FORCE	
	(BH)MAX		BR		HCB		HCJ	
	MGOE	KJ/M³	KGS	MT	KOE	KA/M	KOE	KA/M
STANDARD ENERGY	0.6-0.8	4.8-6.4	1.6-2.1	160-210	1.3-1.7	104-135	2.1-3.0	167-239
HIGH ENERGY	1.0-1.2	8-9.6	2.1-2.4	210-240	1.7-2	135-160	2.3-3.2	184-255

STEEL SHEETING

Steel sheeting (flexisteel) is made by mixing iron powder with plastic (CPE etc.). It has excellent magnetic receptive ability. It is easily cut, bent, twisted, coiled, or can be machined into almost any shape without damaging its magnetic receptive properties. Unlike normal steel sheeting, Newlife's steel sheeting doesn't have hard and sharp corners or edges and it won't cause cuts or injuries and is safe to handle. This material is ideal for white boards, magnetic dartboards, and educational products (like magnetic books, magnetic puzzles and chess boards, etc.) This material is becoming increasling popular for the use as magnetic wall paper. Laminating this material with digital printable or other materials and printing beautiful designs and images creates wall paper that can be exchanged and/or replaced when applied to a wall that has a layer of our magnetic sheeting with adhesive. Resturants, businesses, and home owners can easily change their wall paper according to their mood, holiday, or season. Multiple layers can be applied to create attractive designs and decors. The versatility of this product creates many different decorating and advertizing possibilities.

PLAIN STEEL SHEETING

We offer two kinds of plain steel sheeting, normal flexisteel and antirust flexisteel, which are both sides conductive to magnets and can be laminated with PVC, PP and paper, etc.

SPECIFICATIONS

TYPE	THICKNESS	WIDTH	LENGTH
NORMAL FLEXISTEEL	15-40mil (0.4-1.0mm)	up to 24.375" (620mm)	50F 100F
ANTIRUST FLEXISTEEL	8-20mil (0.2-0.5mm)	up to 64" (1.62M)	

Custom width and length available.

ANTIRUST PLAIN STEEL SHEETING

Newlife's antirust steel sheeting has a higher antirust and weather proof performance.



PART NO.	FINISH	THICKNESS	MAGNETIC CONDUCTION	L x W
NS-PB-010 (NS-PB-25)	Black	10mil (0.25mm)	≥ 14.5 lbs. pull/ft2 (≥ 7g/cm2)	100F x 50" 100F x 54" 100F x 60"
NS-PB-012 (NS-PB-30)		12mil (0.3mm)	≥ 18.5 lbs. pull/ft2 (≥ 9g/cm2)	
NS-PB-020 (NS-PB-50)		20mil (0.5mm)	≥ 33 lbs. pull/ft2 (≥ 16g/cm2)	50F x 24.375" 50F x 40"

ROLLUP WHITEBOARD & CHALKBOARD



ROLLUP HIGH GLOSS WHITEBOARD

Perfect Rewritable Performance

- Superior whiteboard material, high gloss, perfect rewritable performance, made of high quality PET.
- Over 20,000 times of write-on and wipe-off.

Easy to Install

- For iron or steel surface stick magnetic rollup whiteboard directly on the wall.
- When using a magnetic base material, stick magnetic receptive rollup whiteboard onto the magnet sheeting.
- For other non-metal surfaces, install **Wall-Mag adhesive** first, then stick the steel-base rollup whiteboard directly on the magnet. Another option is to stick a removable glue rollup whiteboard on the wall.

ROLLUP PROJECTIVE WHITEBOARD

Matte Surface, Eyes Protective, Projective and Dry-erase

ROLLUP CHALKBOARD

Matte Green Surface, Eyes Protective, Superior Chalk Writing Experience

PART NO.	DESCRIPTION & SUPERIORITY	L x W
GRW-NMB-T020	Magnetic Whiteboard: 16mil magnet with high gloss coated PET (polyester film), total 20mil thick, dry-erasable, work on steel surface	100F x 24" 50F x 40" 50F x 48"
GRW-NS-T012	Magnetic Receptive Whiteboard: 8mil magnetic receptive sheeting with high gloss white PET (polyester film), total 12mil thick, dry-erasable	100F x 24" 100F x 48" 100F x 58"
GRW-NS-T020	Magnetic Receptive Whiteboard: 16mil magnetic receptive sheeting with high gloss white PET (polyester film), total 20mil thick, dry-erasable	100F x 24" 50F x 40" 50F x 48"
PJ-NMB-T020	Magnetic Projective Whiteboard: 16mil magnet with matt coated PET (polyester film), total 20mil thick, projective and dry-erasable	100F x 24" 50F x 40" 50F x 48"
PJ-NS-T012	Magnetic Receptive Projective Whiteboard: 8mil magnetic receptive sheeting with matt white PET (polyester film), total 12mil thick, projective and dry-erasable	100F x 24" 100F x 48" 100F x 58"
PJ-NS-T020	Magnetic Receptive Projective Whiteboard: 16mil magnetic receptive sheeting with matt white PET (polyester film), total 20mil thick, projective and dry-erasable	100F x 24" 50F x 40" 50F x 48"
GCK-NMB-C020	Magnetic Chalkboard: 16mil magnet with matt green PVC (vinyl film), total 20mil thick, chalk writable	100F x 24" 50F x 40" 50F x 48"
GCK-NS-C020	Magnetic Receptive Chalkboard: 16mil magnetic receptive sheeting with matt green PVC (vinyl film), total 20mil thick, chalk writable	100F x 24" 50F x 40" 50F x 48"

CLING-KING™ PRINT MEDIA

STICKS LIKE MAGIC FREE OF RESIDUE NO ADHESIVES WEATHERPROOF



PART NO.	DESCRIPTION & SUPERIORITY	PRINTABILITY		L x W
		COMPATIBLE	TESTING REQUIRED	
CK-UV-TSP	Clear gloss PET with Cling-King back, total 5mil thick, UV curable	UV SC	UV HIGH SPEED	100F x 50" 100F x 54" 165F x 50" 165F x 54"
CK-SOL-TSP	Clear gloss PET with Cling-King back, total 6.5mil thick, good for solvent and eco-solvent printer	S ES SC	UV L LS	
CK-SOL-FST	Frosted matte PET with Cling-King back, total 6mil thick, good for solvent and eco-solvent printer	S ES SC	UV L LS	
CK-UV-PET	White matte PET with Cling-King back, total 5.5mil thick, UV curable	UV L SC		
CK-SOL-PET	White matte PET with Cling-King back, total 6mil thick, good for solvent and eco-solvent printer	S ES SC	UV L LS	

S SOLVENT ES ECO SOLVENT UV UV CURABLE L HP LATEX SC SCREEN PRINT LS TONER/HP INDIGO

- Our **CLING-KING** print media adheres to smooth and non-porous and clean surfaces such as glass, ceramic, plastic, stainless steel and finished wood.
- It can be applied, removed, re-applied multiple times, all free of residue.
- It is no adhesives system, washable and eco-friendly.
- It is suitable for application temperatures from -4 to 176 degrees Fahrenheit (-20°C to 60°C), perfect solution for window signs, glass walls and car signs.
- CLING-KING** is available in white, transparent and frosted, available in 100ft & 140ft rolls, 50" & 54" width.

MACO MAG-PAINT



Newlife Mag-Paint is a kind of high-permeability soft magnetic paint, made of water-based bonding and high power soft magnetic material under Newlife's patent technology. Mag-Paint has compared with the other products. Mag-Paint is easy to paint on indoor wall and board, no need primer, after quickly dry up it can be used directly or paint other top coat. The Mag-Paint wall is no powder-off, anti-rust, without HCHO and other toxic gas.

Mag-Paint wall is magnetic receptive of magnetic graphic, magnetic photo, magnetic frame, magnetic letter etc. It will be unbelievable easy to create whole wall short-changed system or to make personal decorated wall.



ADVANTAGE

- With higher permeability formula, the painted place will get strong magnetic receptive energy with Mag-Paint 2 coats.
- Water-based bonding formula system, lower VOA, non-toxic and odorless.
- Easy paint, quickly dry up
- Sturdy and durable, waterproof and anti-rust
- Luxury color, widely application

PRINTING INDEX AND PACKAGING

PRINTING INDEX AND PACKAGING

PART NO.	● compatible	⊖ testing required	× not compatible				
	UV CURABLE	HP LATEX	(ECO) SOLVENT	TONER/HP INDIGO	SCREEN	LITHO/OFFSET	FLEXO
NM-MWC-019	●	⊖	⊖	×	●	●	●
NM-MWC-024	●	⊖	⊖	×	●	●	●
NM-MWC-034	●	⊖	⊖	×	●	●	●
NMA-MWC-024	●	⊖	⊖	×	●	●	●
NMA-MWC-034	●	⊖	⊖	×	●	●	●
NMA-UV-WT012	●	●	×	×	●	●	●
NMB-UV-WT012	●	●	×	×	●	●	●
NMA-SOL-WT012	⊖	⊖	●	⊖	●	●	●
NMB-SOL-WT012	⊖	⊖	●	⊖	●	●	●
NS-UV-WT010	●	●	×	×	●	●	●
NS-SOL-WT010	⊖	⊖	●	⊖	●	●	●
NS-MWP012	●	×	×	×	●	●	●
NS-ART013	●	●	×	⊖	●	●	●
CK-UV-TSP	●	⊖	×	×	●	●	●
CK-SOL-TSP	⊖	⊖	●	⊖	●	●	●
CK-SOL-FST	⊖	⊖	●	⊖	●	●	●
CK-UV-PET	●	●	×	×	●	●	●
CK-SOL-PET	⊖	⊖	●	⊖	●	●	●

PACKAGING

Newlife's products are carefully packaged and protected for shipping. Our pallets are made of plywood and meet the custom requirements of Europe, America and most all other countries.

