



# Fixed Tooth Polymer Labyrinth Seals

## Advanced Engineering Plastics for Turbo Compressors

### Challenge

**Do you want to improve or at least maintain compressor seal efficiency?**

Mitsubishi Chemical Advanced Materials' family of Duratron® and Ketron® PEEK Materials can tighten compressor seal clearances. The rub tolerant design can prevent tooth profile deformation increasing performance and Mean Time Between Repairs. Our materials also have excellent chemical corrosion properties over common industry standard aluminum seals.

### Common Applications

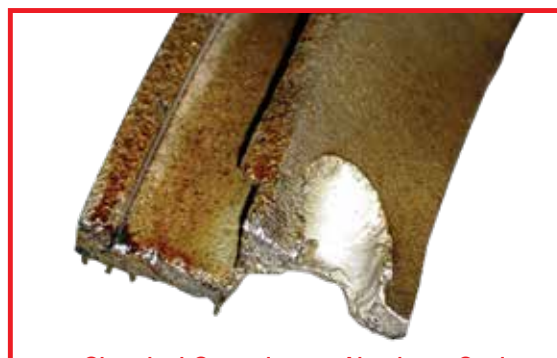
- Fixed Tooth Polymer Labyrinth Seals

### Customer Benefits

- Increased compressor efficiency
- Increased design capabilities
- Reduced downtime
- Lower cost in service



Bent Aluminum Teeth



Chemical Corrosion on Aluminum Seal



Ketron® PEEK Polymer  
Labyrinth Seals

## Trends In Turbo Compressor Market

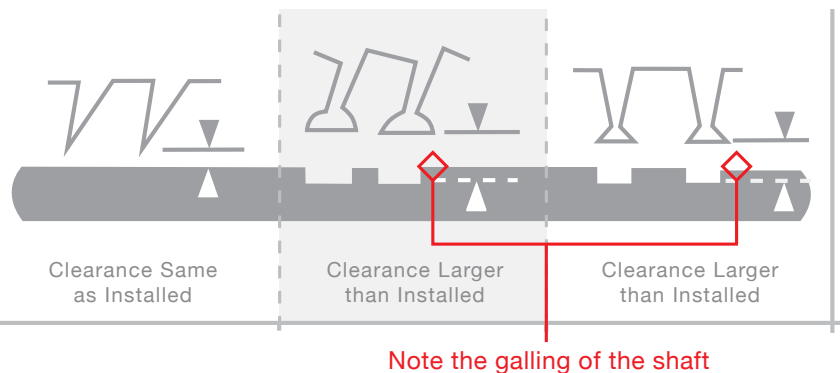
- Higher temperature with increased loads
- Improved efficiency and reliability in compressor seals
- Reduced chemical corrosion
- Increased service life of seals
- Cost effective solutions
- Ease to manufacture

## Mitsubishi Chemical Advanced Materials Added Value

- Duratron® with continuous service temperatures up to 500°F / 260°C
- Ketron® PEEK with continuous service temperatures up to 480°F / 248°C
- Self lubricated materials for rub tolerant seals
- Materials that flex not bend
- High resistance to fuels, lubricants, and chemicals
- Better physical properties than conventional aluminum seals
- Near net shapes, machining and molded parts

### Typical Labyrinth Tooth Designs After Critical Speeds

After exposure to critical speed, the thermoplastic tooth will return to its original shape due to the plastic “memory” of the thermoplastic, while the aluminum tooth remains damaged.



mcam.com |    @MCAMconnect | contact@mcam.com

Distributed by:



For more information visit  
[www.piedmontplastics.com](http://www.piedmontplastics.com)

All statements, technical information and recommendations contained in this publication are presented in good faith and are, as a rule, based upon tests and such tests are believed to be reliable and practical field experience. The reader, however, is cautioned, that Mitsubishi Chemical Advanced Materials does not guarantee the accuracy or completeness of this information and it is the customer's responsibility to determine the suitability of Mitsubishi Chemical Advanced Materials' products in any given application. Duratron and Ketron are registered trademarks of the Mitsubishi Chemical Advanced Materials group of companies.

Design and content created by Mitsubishi Chemical Advanced Materials and are protected by copyright law. Copyright © Mitsubishi Chemical Advanced Materials. All rights reserved.

MCM OG 002G | 9.5.19

