



Heavy Equipment *Solutions*



Piedmont Plastics®

where solutions take shape



Why Piedmont?

WE OFFER

- ✓ **Over 50 Branch Locations**
- ✓ **Expert Product Knowledge**
- ✓ **Local Inventory & Value-Added Services**

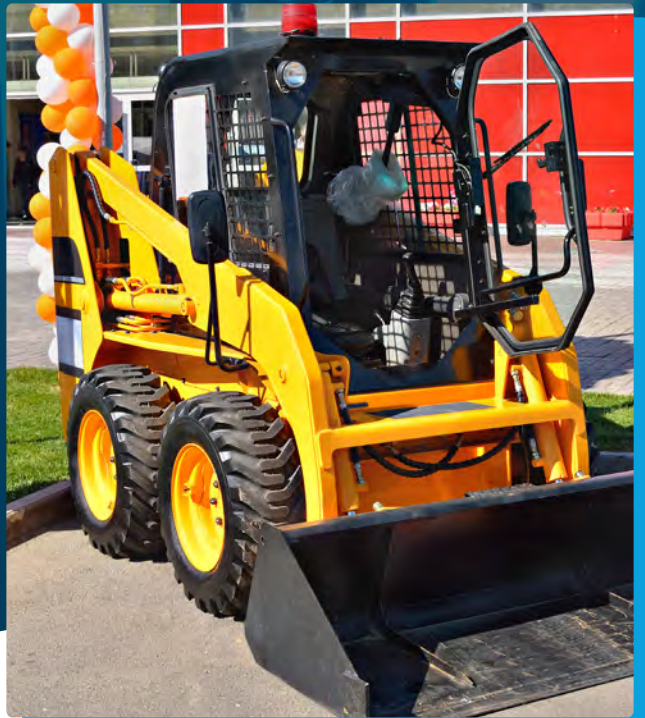
WHO WE ARE

At Piedmont Plastics®, our recipe for success for over 50 years has been excellent customer service, local, knowledgeable employees, and competitive prices on the world's best brands.

In that time, we have grown from a local supplier of basic plastic shapes and films, to one of the leading plastic distributors in North America.

With a reputation for integrity that permeates every aspect of our business, we have established a legacy of customer service and product quality. We embrace every opportunity to promote enjoyable, profitable relationships with our customers, employees and suppliers.

With over 50 distribution centers throughout North America, chances are, we have what you need, when you need it... FAST.



OUR COMMITMENT

Customer service is a core value of Piedmont Plastics. We are committed to providing every customer with the highest level of service in the industry. This commitment reaches far beyond simply providing you with our knowledgeable sales representatives and the right product mix. Through our dedication to this goal, our customers have come to rely on us for:

- On-Time Shipping
- Industry Expertise
- Quality Management Systems
- Premier Brands
- State-of-the-Art Conversion Equipment

the
PREMIER CHOICE
for your heavy equipment needs

Find more solutions at
www.piedmontplastics.com



Cab Glazing Solutions

POLYCARBONATE SHEET

Tuffak® FP

Glazing that can be structurally bonded to cab and offers excellent UV and scratch protection.

Tuffak® AR

Glazing that must be mechanically fastened and offers excellent UV and scratch protection.

Tuffak® HV

Glazing that performs similarly to Tuffak® AR, but with improved optics and protection for heavy equipment

Tuffak® TG

Glazing that performs similarly to Tuffak® HV, but will meet most transportation codes

TUFFAK®
by PLASKOLITE



HYGARD®, LEXGARD®

Laminated glazing applications that require operator protection from flying objects, ballistic and forced entry protection, and must be flat, not curved.

CUSTOM SOLUTIONS

Anti-fog coatings, PET tear-offs for glazing protection, optical heaters for cab comfort and anti-fog, thermoformed parts, hard coating, fritting, part identification, and laminating.





Interior Cab Solutions

PVC/PMMA - KYDEX® T

Thermoformed parts, such as:

- Seating components
- Wall cladding
- Window reveals

POLYCARBONATE - KYDEX® 2200LT

Thermoformed parts, such as:

- Seatbacks
- Bulk head components
- Arm rests
- Wall/ceiling panels
- Window shrouds

ABS

- Dash components
- Wall components

LED LIGHTS

- Modules
- Strips
- Printed



PRINTED ELECTRONICS

- Toggle and push button replacement

CR39

- LCD display protection



Wear, Compression & Impact Solutions

POLYCARBONATE

- Snow plow blades
- Mounting blocks
- Equipment view windows

ACETAL

- Wear bearings
- Impellers
- Rollers
- Tarp bows
- Sliding elements

NYLON

- Wear bearings
- Hoist couplers
- Rollers
- Pulleys
- Sliding elements
- Bucket pivot bushings
- String glider parts
- Pile drivers
- Cable sleeves on drag lines
- Cable clamps
- Boom pads

PET, PPS, PEEK, & PTFE

PET

- Hanging bearing for augers
- Mounting blocks

PEEK

- Piston rings
- Gears & Seals

PPS

- Seals & Rings

PTFE

- Seals
- Tank liners

UHMW - POLYSTONE® MATROX®, RAMEX®, PREMIUM, REPROCESSED, SYMPLATE™

- Bucket
- Hopper
- Silo
- Conveyor/chute liners
- Snowplow blades

VHW - HY-PACT®

- Exterior applications (UV Protected)
- Bucket
- Hopper
- Silo and chute liners

URETHANE

- Bucket & Sheet Liners
- Snowplow Blades





Exterior Body Solutions

CO-EXTRUDED POLYCARBONATE SHEET

Thermoformed parts that require weathering capability, durability, high and low temperature resistance in extreme outdoor applications, and that must be ductile and have a repairable surface.

ACRYLIC CAPPED HIGH IMPACT ABS SHEET

Thermoformed parts that require high gloss finish, outdoor weathering and durability.

TRI-LAYERED PMMA/ABS SHEET

Thermoformed parts that require UV protection, high gloss or matte surfaces, and great depth of colors and images.

ASA CAPPED HIGH IMPACT ABS SHEET

Thermoformed parts that require high gloss finish, outdoor weathering, durability and good color retention.



TPO SHEET

Thermoformed parts that require high gloss finish, low temperature, impact strength, chemical resistance, dimensional stability, high heat resistance and a large thermoforming processing window.

SAFE PASS MUD FLAPS

Anti-Curl, Anti-Sail, Anti-Spray mud flaps

SYM-MAT

Door mat designed for the step rail of conventional tractors

Heavy Equipment **Solutions** | 5



For a full list of locations, visit
piedmontplastics.com/locations

We're closer than you think.

Important: It is the user's responsibility to ensure the suitability and safety of the product for all intended uses. As a distributor, Piedmont Plastics® does not warrant the merchantability of the product or the capability of the product for the purpose intended by the user. Users should independently test each material prior to use, for suitability for their specific purpose according to instructions in any technical data sheet. Piedmont Plastics® does not assume any responsibility or liability for any advice provided, or for performance or results of any installation or use of the product or any final product into which the product may be incorporated by the purchaser and/or user.

 **Piedmont Plastics®**
where solutions take shape